



## Clean power. High performance.

People's needs and desires are right at the heart of every Yamaha product we design - and the new Drive<sup>2</sup> AC AGM is a perfect example of how our innovative thinking enables us to create vehicles that can make a positive and enjoyable contribution towards our customers' daily lives.

As well as being one of today's most successful and appealing electric golf cars, offering best-in-class seating and luxury, the Drive<sup>2</sup> AC AGM is supremely versatile, so it can be used as a specialist multi-purpose vehicle that's ready to be put to work on a huge variety of tasks, both indoors and out.

The outstanding Drive<sup>2</sup> AC AGM isn't just comfortable, powerful and responsive, with zero emissions, and almost silent operation, it is also easy to maintain, efficient and sustainable. Don't take our word for it – try it yourself.



- Class-leading 3.3kW AC electric motor
- Long-lasting AGM battery power for true high performance on hilly courses
- End-of-life recyclable Trojan T-875 AGM batteries
- Sleek body design and stylish colours – 2 new choices
- Spacious automotive style dash with extra storage
- Modular body with best-in-class seating and space
- Virtually silent running with zero emissions
- State-of-the-art regenerative braking
- Light and strong HybriCore chassis
- Fully independent front suspension

## Clean power. High performance.

Our premium Drive<sup>2</sup> AC golf car is every golfer's dream machine. Its powerful new 3.3 kW motor and high-performance recyclable Trojan AGM batteries make light work of long, hilly courses and together with the outstanding interior comfort, it delivers a soft ride that's simply the ultimate in style and luxury.

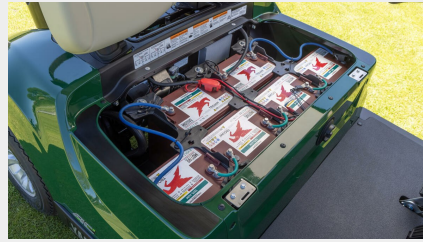
Designed for courses where its extensive range and above-average ability to master slopes and steep hill paths with total confidence and sure-footedness will be particularly valuable, the stylish Drive<sup>2</sup> AC AGM – with 2 new colour choices for the latest model - is a golf car of unmatched quality.

The combination of an ultra-spacious, comfortable and luxurious interior, with silky smooth acceleration and relaxingly quiet performance is great for golfers, while guaranteeing top efficiency for course owners, thanks to its low maintenance needs. The zero-emissions factor is another key benefit for owners.



## New 3.3 kW electric motor

The Drive<sup>2</sup> AC models feature the new high-efficiency electric motor – widely acknowledged as the most sophisticated and powerful design in its class. The smooth acceleration powers you up to full speed in an instant and delivers supreme hill-climbing ability, making this whisper quiet, zero-emissions vehicle suitable for every environment.



## AGM battery power – true high-performance

The recyclable Trojan AGM battery technology in this premium Drive<sup>2</sup> model delivers the performance to keep it running strongly through the longest golfing days, so while the players may get tired, the trusty Drive<sup>2</sup> AC AGM will always last the course. What's more, the low maintenance requirement and end-of-life battery recyclability help the course owner and the environment.



## Larger automotive style dash

The Drive<sup>2</sup> has been designed with the modern golfer in mind and features an automotive style dashboard with conveniently placed stowage space for drinks and personal items. The storage bin with its non-slip mat is ideal for phones, and the optional USB outlets mean players can ensure their devices are kept charged throughout the day.



## Supremely comfortable contoured seats

The industry's largest and most comfortable seats feature deep, supportive contours that help to hold occupants in place while on the move. With their generous legroom and spacious interiors, the Drive<sup>2</sup> is designed to accommodate users of all heights and sizes, to ensure that every player enjoys their day to the maximum.



## Smooth suspension for a luxurious ride

Yamaha's maintenance-free suspension is fully independent at the front, and this advanced design uses automotive-style, coil-over shock struts to minimise roll for a smooth ride. The latest Drive<sup>2</sup> models also benefit from redesigned longer stroke rear suspension for increased comfort.



## Modular body design – practical and durable

The Drive<sup>2</sup> has a modular body design that makes it easy to own and maintain, enabling operators to keep down-time to a minimum, for increased efficiency and profitability. A 3-part rear panel reduces repair costs and gives easy access to the motor, while the sturdy bumpers and durable body panels are built to ensure optimum strength and durability.



## Power supply/Drive train

Output rating	3.3 kW
Motor	48 volt AC Motor
Batteries	Six 8-volt Trojan T875 Batteries

## Dimensions

Overall length	2,380 mm
Overall width	1,200 mm
Wheel base	1,635 mm
Minimum ground clearance	105 mm
Overall height (sun top & windshield)	1,765 mm
Front wheel tread	890 mm
Rear wheel tread	980 mm
Floor board height	295 mm

## Chassis

Frame	Automotive style HybriCore™ Chassis, polyester/urethane powder topcoat
Body	Thermoplastic olefin, 2-part top coat of automotive-grade polyurethane
Steering	Padded Steering Wheel
Front suspension	Fully independent automotive-style strut suspension
Rear suspension	Mono-linkage
Brakes	Self adjusting rear drum
Seating	2 persons

## Performance

Maximum forward speed	24 km/h
Turning radius	2.8 metre

## General

Seating capacity	2 persons
Tyre size	18 x 8.5 -8 (4 ply rated)
Curb weight ( with sun top, battery, oil and fuel)	448 kg