



Dial in to the victorYZone

The difference between winning and losing can come down to fractions of a second. And at Yamaha we're committed to the ongoing development of technology that will give you every possible advantage in terms of power, handling and control.

Every track is different. Weather and surface conditions are constantly changing. And so we developed the Power Tuner smartphone app to give you the ability to adapt to every situation – and also share data with your riding buddies.

From the electric start engine through to the lightweight chassis, slim body and cutting edge suspension, the 2019 YZ450F is ready to bring out your maximum potential.



- High performance reverse head engine
- Power Tuner smartphone app
- High-compression cylinder head
- Light electric starter with lithium-ion battery
- Slimmer and more compact body design
- High-rigidity bilateral beam frame
- Optimised suspension matching the frame
- Easy air filter replacement system
- Radiator with better cooling
- Compact 6.2-litre fuel tank
- New front axle brackets & wheel collars

Connected as One.

This is the most complete motocross package we've ever created. And it's also the first production bike that allows you to connect wirelessly and dial in your own customized engine settings - and maximize your winning potential.

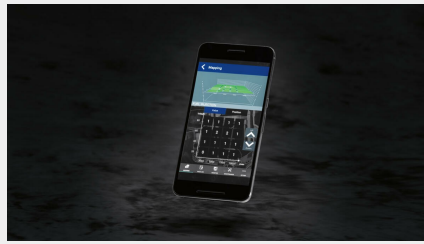
The lightweight electric start saves vital seconds when you're under pressure – and the reverse head engine gets a high compression top end and optimized ECU for even stronger race winning power.

With its lightweight frame and refined suspension, this YZ450F gives you improved stability and agility over whoops and through corners. And its slim and compact bodywork delivers total rider agility combined with factory bike looks.



Reverse head engine

With its high-tech reverse head engine, this YZ450F gives you a wide spread of power for maximum race-winning potential. Featuring a higher compression head, piston, cam profiles, cylinder geometry, air intake, ECU and much more - this MXGP-bred design gives you the factory performance you need to power into the victorYZone!



Power Tuner smartphone app

Connect with your dirt bike like never before with the world's first smartphone app for our Power Tuner! Using your device's touch screen, you can instantly fine-tune your fuelling and ignition settings to achieve optimum performance. And the sharing function also allows you to compare your settings and race logs with other YZ450F riders!



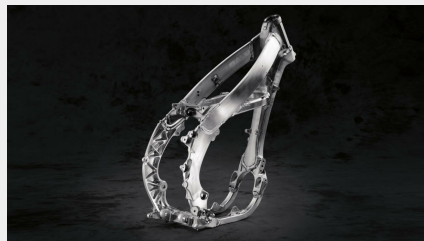
Lightweight electric starter

The fitment of an ultra-light and extremely compact electric starter gets you up and running at the push of a button. Weight is kept low by the use of a lithium-ion battery, and the electric start's unique design means that the engine's compact external dimensions are the same size as before.



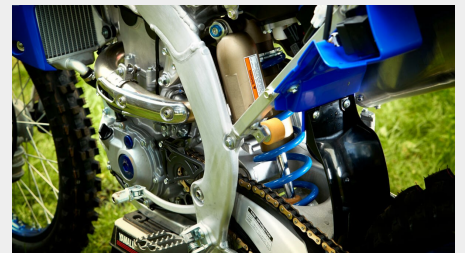
Slim and compact body

As soon as you get on this cutting-edge race bike it feels slimmer and more compact. The smaller 6.2-litre fuel tank and redesigned airbox permit the use of new concave shrouds featuring a larger knee grip area that gives added controllability. As well as reducing weight, this slimline bodywork also underlines the feeling of lightness and agility.



Lightweight frame

We've developed a bilateral beam frame that gives increased longitudinal, lateral and torsional rigidity for sharper handling, giving you a real advantage on every corner. And for greater stability and controllability, the electric start engine is repositioned in the lightweight frame.



Advanced suspension

The YZ450F is the most complete racing package, and as well as its advanced engine and frame, this MXGP-bred winner runs with trick suspension systems. The class-leading AOS forks feature internals and settings that result in better damping performance - and the rear shock comes with a lighter spring and increased reservoir capacity.

Engine	
Engine type	4-stroke; Liquid-cooled; DOHC; 4-valves; Rear ward slanting single cylinder
Displacement	449cc
Bore x stroke	97.0 mm x 60.8 mm
Compression ratio	12.8 : 1
Lubrication system	Wet sump
Clutch Type	Dual side grinded clutch plate
Ignition system	TCI
Starter system	Electric
Transmission system	Constant Mesh; 5-speed
Final transmission	Chain
Carburettor	Fuel Injection
Maximum power	-
Maximum Torque	-
Fuel consumption	-
CO2 emission	-

Chassis	
Frame	Bilateral Beam frame
Front suspension system	Upside-down telescopic fork
Front travel	310 mm
Rear suspension system	Swingarm; (Link type suspension)
Rear Travel	317 mm
Front brake	Hydraulic single disc, Ø270 mm
Rear brake	Hydraulic single disc, Ø245 mm
Front tyre	80/100-21 51M
Rear tyre	110/90-19 62M
Caster Angle	27°15
Trail	121mm

Dimensions	
Overall length	2,185 mm
Overall width	825 mm
Overall height	1,285 mm
Seat height	965 mm
Wheel base	1,485 mm
Minimum ground clearance	335 mm
Wet weight (including full oil and fuel tank)	112 kg
Fuel tank capacity	6.2litres
Oil tank capacity	0.95litres



YZ450F

Always wear a helmet, eye protection and protective clothing. Yamaha encourage you to ride safely and respect fellow riders and the environment. Images shown depict professional riders performing under controlled conditions. Specifications and appearance of Yamaha products as shown here are subject to change without notice and may vary according to requirements and conditions. For further details, please consult your Yamaha dealer.